

# RECOMMENDATIONS TO PROMOTE INFORMAL LEARNING SPACES



Akdeniz University

Doç. Dr. Evrim Çetinkaya Yıldız

Executives & decision makers

Enablers & practitioners

## Enhancing awareness



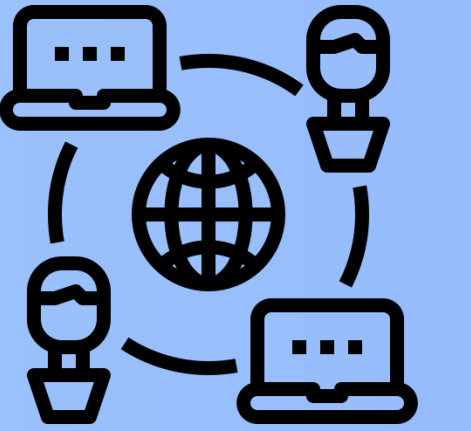
- Conduct orientation sessions and campus tours to introduce students and staff to informal learning spaces (ILSs). (Primarily responsible: Enablers and Practitioners)
- Create promotional materials such as posters, brochures, and digital signage to raise awareness. (Primarily responsible: Enablers and Practitioners)
- Organize informational sessions and workshops to educate stakeholders about the features and uses of ILSs. (Primarily responsible: Enablers and Practitioners)
- Utilize social media platforms, university newsletters, and other communication channels to share success stories and updates about ILS initiatives. (Primarily responsible: Enablers and Practitioners)
- Partner with student organizations, campus ambassadors, and other relevant stakeholders to advocate for the importance of ILSs and encourage their use. (Primarily responsible: Enablers and Practitioners)

## Taking action



- Establish task forces, working groups, or learning communities dedicated to implementing improvements related to ILSs. (Primarily responsible: Executives and Decision Makers)
- Pilot new initiatives in collaboration with students and staff to test their effectiveness before full implementation. (Primarily responsible: Executives and Decision Makers)
- Allocate resources and funding to support innovative projects and initiatives aimed at enhancing ILSs. (Primarily responsible: Executives and Decision Makers)
- Recognize and celebrate individuals and teams who take proactive steps to improve and promote the use of ILSs. (Primarily responsible: Executives and Decision Makers)
- Encourage faculty and staff to incorporate ILSs into their teaching and research activities, leading by example. (Primarily responsible: Enablers and Practitioners)

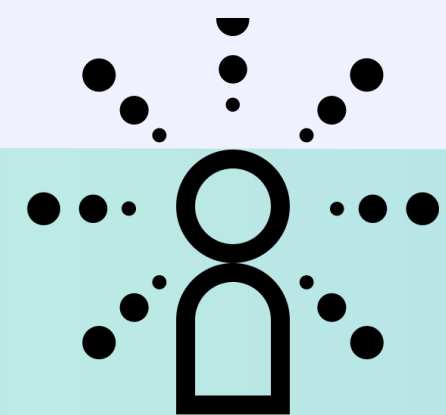
## Increasing communication & networking



- Foster partnerships with external organizations, industry professionals, and alumni to broaden the reach and impact of ILS initiatives. (Primarily responsible: Executives and Decision Makers)
- Establish communication channels for ongoing dialogue between students, faculty, administrators, and facility managers regarding ILS needs and priorities. (Primarily responsible: Executives and Decision Makers)
- Provide professional development opportunities for staff and faculty involved in ILS initiatives. (Primarily responsible: Executives and Decision Makers)
- Create online platforms or forums where stakeholders can share ideas, feedback, and best practices related to ILSs. (Primarily responsible: Enablers and Practitioners)
- Host regular networking events or meetups where stakeholders can connect, collaborate, and share insights about ILSs. (Primarily responsible: Enablers and Practitioners)

Lecturers

## Enhancing awareness



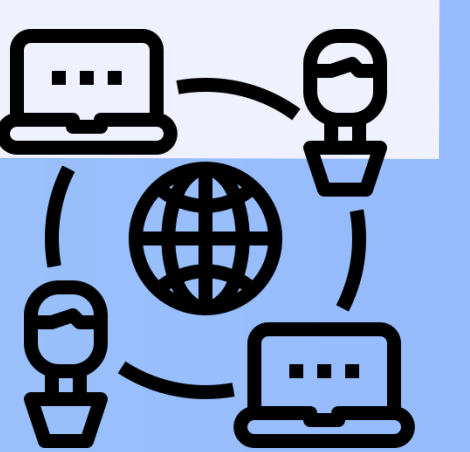
- Recognize the significance of ILSs and advocate for their implementation within university structures.
- Engage actively in the design, enhancement, and management of ILSs, and promote awareness among peers.
- Familiarize yourself with available ILSs both on and off campus to inform teaching decisions and learning activities.
- Incorporate group work into course planning to foster student interaction and utilization of ILSs.
- Inform and motivate students to explore and utilize various ILSs, especially within group/team projects.
- Recognize diverse student needs and guide them to suitable informal learning spaces.
- Mediate between students and administration to transform existing spaces into ILSs.
- Facilitate the creation of learning communities focused on improving ILSs across the university.

## Taking action



- Implement diverse teaching methods that encourage student engagement and interaction within ILSs, such as problem-based learning or flipped classroom approaches.
- Collaborate with colleagues to share best practices and innovative ideas for integrating ILSs into teaching strategies.
- Organize workshops or training sessions for students to familiarize them with the features and benefits of different ILSs on campus.
- Advocate for the allocation of resources to improve and maintain ILSs, such as updating technology or enhancing accessibility features.
- Actively participate in research projects or case studies focused on the effectiveness of ILSs in enhancing student learning outcomes.

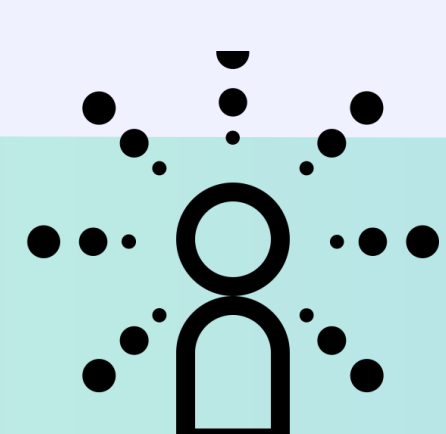
## Increasing communication & networking



- Establish a dedicated online platform or forum where lecturers can share experiences, resources, and recommendations related to ILSs.
- Encourage interdisciplinary collaboration among faculty members to explore new ways of utilizing ILSs across different subject areas.
- Initiate regular meetings or discussions with students to gather feedback on their experiences with ILSs and address any concerns or suggestions.
- Engage with industry partners or external organizations to explore potential collaborations or sponsorships for enhancing ILSs.
- Attend conferences, seminars, or webinars focused on educational technology and interactive learning environments to stay updated on emerging trends and best practices.

Students

## Enhancing awareness



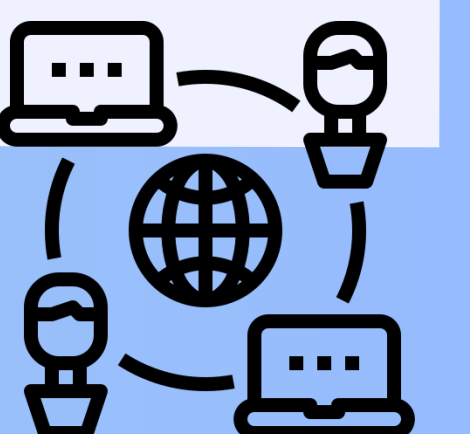
- Actively inform yourself about available ILSs and use them consciously and purposefully for different learning activities and informal exchange.
- Utilize ILSs to benefit from peer learning opportunities.
- Collaborate with users to establish inclusive usage rules and prevent monopolization of spaces.
- Provide feedback to enhance accessibility and quality of ILSs, addressing issues like extended hours and improved booking systems.
- Utilize the NIILS platform to explore available ILSs and suggest additions, contributing to a comprehensive directory.

## Taking action



- Form study groups or project teams and utilize ILSs for collaborative learning and brainstorming sessions.
- Take initiative in organizing student-led workshops or events within ILSs to share knowledge and skills with peers.
- Volunteer to participate in focus groups or committees aimed at improving the design and functionality of ILSs on campus.
- Establish learning communities on ILSs.
- Explore opportunities for experiential learning or internships that involve utilizing ILSs for research or project work.
- Advocate for the establishment of designated quiet zones within ILSs to accommodate different learning preferences and needs.

## Increasing communication & networking



- Join learning communities, student clubs, and organizations focused on ILSs, educational technology, and innovation to connect with like-minded peers and professionals.
- Utilize social media platforms or online forums to share tips, recommendations, and experiences related to utilizing ILSs for learning and collaboration.
- Attend campus-wide events or seminars where guest speakers discuss topics related to ILSs, interactive learning, and educational technology.
- Participate in surveys or feedback sessions organized by university administration to voice opinions and suggestions regarding ILSs.
- Collaborate with faculty members or academic advisors to explore research opportunities or projects related to ILSs and student learning outcomes.